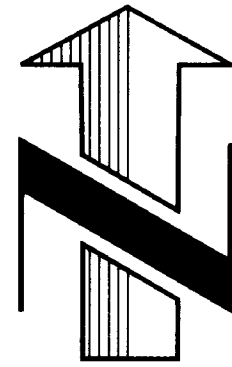


**NOTES:**

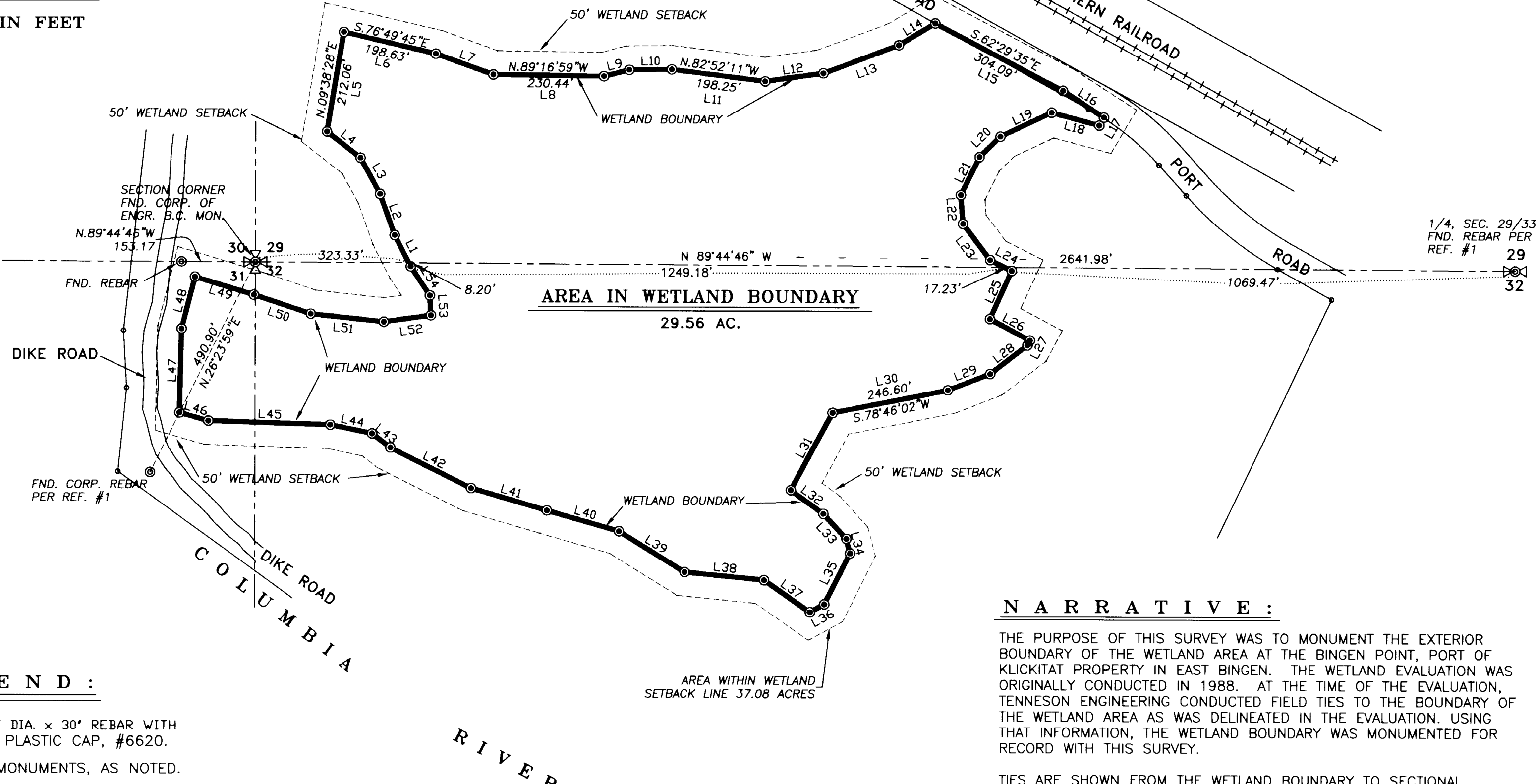
- 1) BEARINGS BASED ON WASHINGTON STATE COORDINATE SYSTEM, SOUTH ZONE GRID.  $\phi = -0^{\circ}43'07''$
  - 2) WETLAND BOUNDARY IS PER THE 1988 WETLAND EVALUATION CONDUCTED BY I.E.S. ASSOCIATES AND SHOWN ON TEC'S MAP OF THE EAST BINGEN PORT OF KLICKITAT PROPERTY AND SURROUNDING AREAS PREPARED IN 1987 AND REVISED IN 1988. (REF.#1)
- WATER SURFACE AT TIME OF 1988 SURVEY= 73.7 MSL, CURRENT WATER SURFACE ELEV= 72.4 MSL.



0' 100' 200' 400'  
SCALE IN FEET

**REFERENCES:**

- 1) BINGEN POINT SURVEY BY TENNESON ENGINEERING CORP. W.O. #6903



LINE	ANGLE	DISTANCE
L1	S27°14'14"E	73.79'
L2	N19°43'12"W	91.62'
L3	S28°54'59"E	86.45'
L4	S52°14'19"E	89.49'
L5	N9°38'28"E	212.064
L6	S76°49'45"E	198.629
L7	S70°06'59"E	128.166
L8	N89°16'59"W	230.442
L9	N75°47'01"E	55.449
L10	S89°15'17"W	89.431
L11	S82°52'11"E	198.245
L12	S81°54'22"W	122.131
L13	S69°16'00"W	168.186
L14	S59°05'37"W	89.569
L15	N62°29'35"W	304.090
L16	S56°49'02"E	102.232
L17	S29°50'42"W	19.362
L18	S74°58'27"E	103.043
L19	N64°51'08"E	119.145
L20	N45°46'48"E	61.590
L21	N26°08'12"E	88.784
L22	N4°24'39"W	60.521
L23	S37°22'16"E	95.308
L24	N63°42'54"W	51.048
L25	N24°25'11"E	110.810
L26	S62°07'37"E	95.951
L27	S27°36'32"W	11.376
L28	N52°39'40"E	98.887
L29	N68°58'54"E	95.730
L30	N78°46'02"E	246.600
L31	N27°56'13"E	183.291
L32	S53°55'24"E	83.360
L33	N42°21'33"W	70.825
L34	S14°35'39"E	31.409
L35	N26°32'06"E	119.166
L36	S60°54'57"W	33.882
L37	S55°05'57"E	116.744
L38	S84°25'02"E	168.261
L39	S58°32'30"E	162.771
L40	S74°07'56"E	157.650
L41	S73°38'20"E	163.983
L42	N63°30'28"W	189.705
L43	N53°05'23"W	48.603
L44	S78°21'51"E	90.131
L45	S88°15'01"E	255.372
L46	S73°57'40"E	62.207
L47	S1°19'43"W	175.438
L48	S14°14'54"W	111.925
L49	S73°01'52"E	127.876
L50	S71°39'33"E	125.510
L51	N83°54'54"W	155.693
L52	S82°02'39"W	99.830
L53	N2°58'39"W	41.421
L54	S33°45'21"E	73.097

**LEGEND:**

- SET 5/8" DIA. x 30" REBAR WITH YELLOW PLASTIC CAP, #6620.
- ⊙ FOUND MONUMENTS, AS NOTED.
- CALCULATED CORNERS, NOT SET.
- SET HUB & TACK.
- SET P.K. NAIL OR AS NOTED.
- x— EXISTING FENCE LINE.

**NARRATIVE:**

THE PURPOSE OF THIS SURVEY WAS TO MONUMENT THE EXTERIOR BOUNDARY OF THE WETLAND AREA AT THE BINGEN POINT, PORT OF KLICKITAT PROPERTY IN EAST BINGEN. THE WETLAND EVALUATION WAS ORIGINALLY CONDUCTED IN 1988. AT THE TIME OF THE EVALUATION, TENNESON ENGINEERING CONDUCTED FIELD TIES TO THE BOUNDARY OF THE WETLAND AREA AS WAS DELINEATED IN THE EVALUATION. USING THAT INFORMATION, THE WETLAND BOUNDARY WAS MONUMENTED FOR RECORD WITH THIS SURVEY.

TIES ARE SHOWN FROM THE WETLAND BOUNDARY TO SECTIONAL MONUMENTS IN THE PORT AREA. ALSO SHOWN IS THE 50-FOOT SETBACK FROM THE DESIGNATED WETLAND BOUNDARY.

MONUMENTS SET ON THE PERIMETER ARE 5/8" X 30" REBAR WITH YELLOW PLASTIC CAP #6620.

**NOTES:**

**RELATIVE ACCURACY:**  
THIS SURVEY WAS CLOSED TRAVERSE WITH A MAXIMUM RELATIVE ERROR OF 1 PART IN 20,000.

**EQUIPMENT:**  
LEICA TCM 1100, 0"00"03" THEODOLITE AND ELECTRONIC DISTANCE MEASURING UNIT.

**PROCEEDING:**  
CLOSED FIELD TRAVERSE USING DOUBLED ANGLE MEASUREMENT AND AVERAGE OF DISTANCE READING.

**AUDITOR'S CERTIFICATE:**

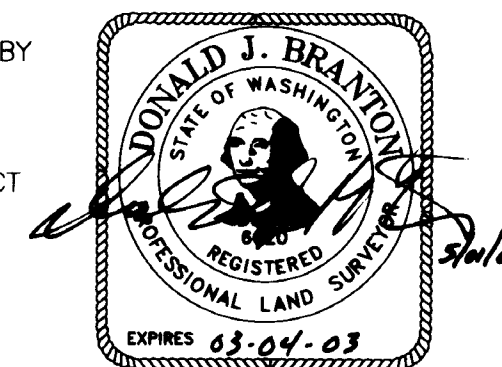
FILED FOR RECORD THIS 3<sup>rd</sup> DAY OF May, 2001, AT 2:23 P.M. IN BOOK 11 AT PAGE 61 AT THE REQUEST OF DONALD J. BRANTON, #1023155 REGISTERED LAND SURVEYOR #6620.

Diana Housden  
COUNTY AUDITOR

**SURVEYOR'S CERTIFICATE:**

THIS MAP CORRECTLY REPRESENTS A SURVEY MADE BY ME OR UNDER MY DIRECTION IN CONFORMANCE WITH THE REQUIREMENTS OF THE SURVEY RECORDING ACT AT THE REQUEST OF KLICKITAT COUNTY PORT DISTRICT No. 1 IN AUGUST, 2000. (AMENDED APRIL, 2001)

Donald J. Branton  
DONALD J. BRANTON, REGISTERED LAND SURVEYOR, #6620.



Date	No.	Revisions	By	App.
<b>AMENDED SURVEY OF WETLAND AREA AT BINGEN POINT PROPERTY FOR KLICKITAT COUNTY PORT DISTRICT #1 IN SECTIONS 29, 31 &amp; 32, TWP.3 N., RANGE 11 E. W.M., KLICKITAT COUNTY, WASHINGTON</b>				
<b>TENNESON ENGINEERING CORP.</b> CONSULTING ENGINEERS 409 LINCOLN STREET THE DALLES, OREGON 97058 541-296-9177 FAX 541-296-6657				
Survey	Calculation	Design	Date	Scale
B.R.H.	B.B.B.		5/01/2001	1"=200'
Drawn	DWG. No.	Checked & App.	Work Order No.	Sheet
S.D.H.	9888		9888	1 of 1