

Equal Population Criterion

Ideal Population	4,484
Overall Deviation	0.3%

< 5.0% 5.0 - 10.0% > 10.0%

Total Population & Deviation per District

District	Total Population	Over / Under Ideal	Deviation From Ideal
1	4,478	-6	-0.1%
2	4,491	7	0.2%
3	4,482	-2	-0.0%

2020 Census P.L. 94-171 Redistricting
Data Summary Files - Total Population.

Total Population by Race/Ethnicity per District

District	White	Black or African American	American Indian or Alaska Native	Asian	Native Hawaiian and Pacific Islander	Some Other Race	Two or More Races	Hispanic/Latino
1	72.9%	0.1%	1.6%	0.8%	0.1%	0.4%	5.1%	19.0%
2	81.9%	0.2%	1.9%	0.6%	0.1%	0.7%	6.0%	8.4%
3	71.7%	0.5%	1.7%	0.4%	0.1%	0.3%	5.5%	19.8%

2020 Census P.L. 94-171 Redistricting Data Summary Files - Total Population by Race and Hispanic/Latino Origin.

VAP by Race/Ethnicity per District

District	White	Black or African American	American Indian or Alaska Native	Asian	Native Hawaiian and Pacific Islander	Some Other Race	Two or More Races	Hispanic/Latino
1	76.1%	0.1%	1.6%	0.8%	0.1%	0.6%	4.6%	16.0%
2	84.8%	0.3%	1.7%	0.8%	0.0%	0.7%	5.2%	6.6%
3	72.4%	0.6%	1.3%	0.4%	0.1%	0.3%	5.1%	19.8%

2020 Census P.L. 94-171 Redistricting Data Summary Files - Voting-age Population (VAP) by Race and Hispanic/Latino Origin.

CVAP by Race/Ethnicity per District

District	White	Black or African American	American Indian or Alaska Native	Asian	Native Hawaiian and Pacific Islander	Two or More Races	Hispanic/Latino
1	89.1%	0.0%	0.0%	0.2%	0.0%	2.9%	8.0%
2	92.1%	1.1%	0.3%	1.0%	0.0%	2.0%	3.3%
3	84.8%	0.1%	2.6%	0.7%	0.0%	3.5%	8.4%

2015-2019 American Community Survey Citizen Voting-age Population (CVAP) by Race and Ethnicity Special Tabulation. Rounding of estimates may lead to summation of race/ethnicity percentages not equal to 100% (+/- 1%).

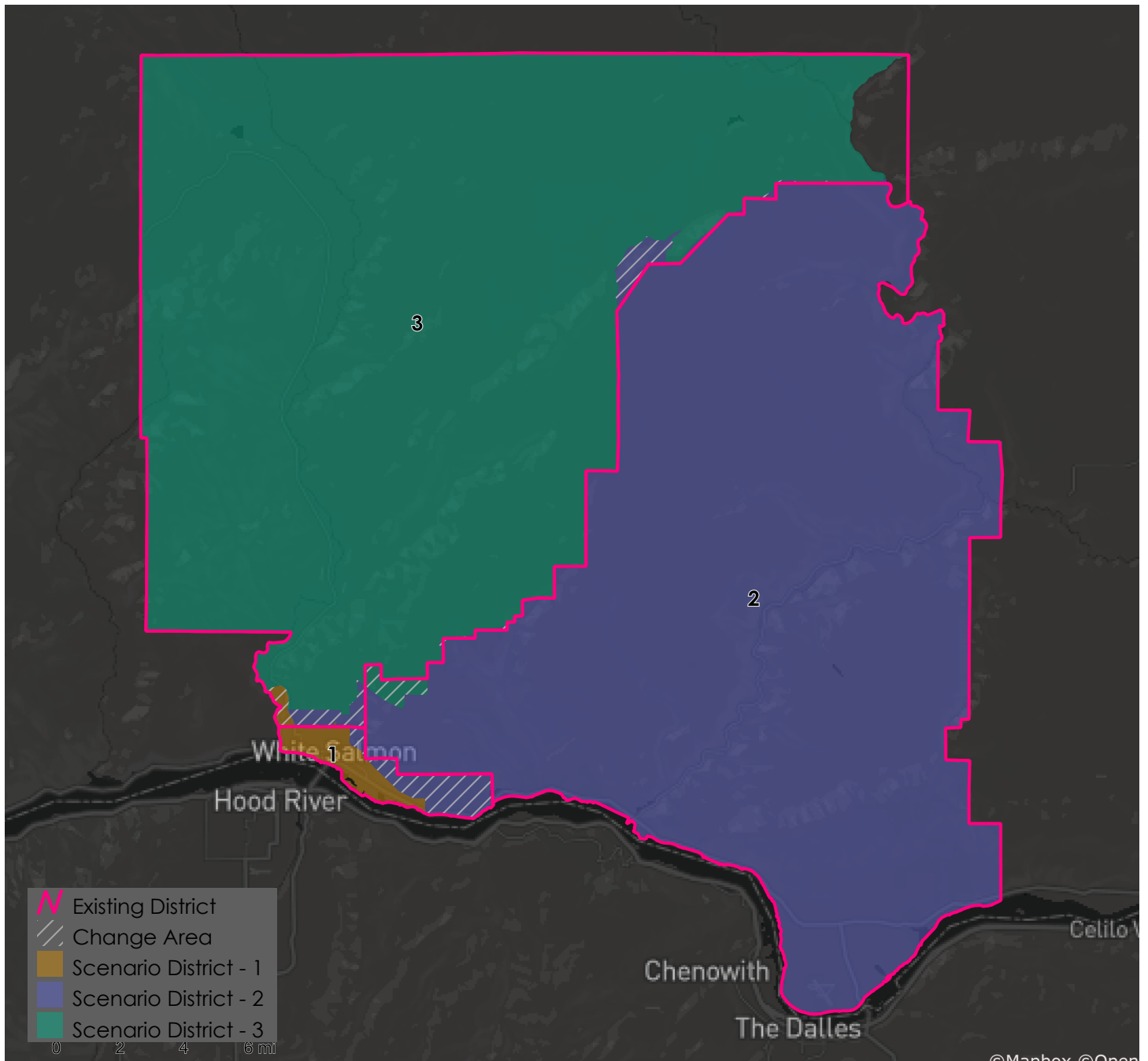
Contiguity Criterion

Are all districts contiguous at more than a point or by bridge or by regular ferry service? **Yes**

Preservation of Geographic Integrity Criteria (i.e., minimize division of cities, communities of interest, etc. based on geographic area)

COI Category	Total # of COIs	# of COIs Preserved in Minimum Districts	% of COIs Preserved in Minimum Districts	COIs Not Preserved in Minimum # of Districts
Voting Precincts	18	14	78%	Glenwood, Mtn Brook, North Fruit Valley, Pine Forest

The category "COIs Not Preserved in Minimum # of Districts" includes any geographic entity that is divided, even minimally, by a [district/ward/etc.] boundary.



Metadata

Run Date/Time:	2022-07-01 15:06:57
Workflow Directory:	X:\F0139_Port_of_Klickitat\Projects\Alteryx\
Feature Class:	File: gdb:X:\F0139_Port_of_Klickitat\Data\Redist.gdb\ Blocks_2020_02
Scenario:	Districts_Scenario_1